



Water Street Staircase Rehabilitation and Capital Crescent Trail Trailhead Project

**Public Meeting #1
August 25, 2020**

Welcome and Introductions



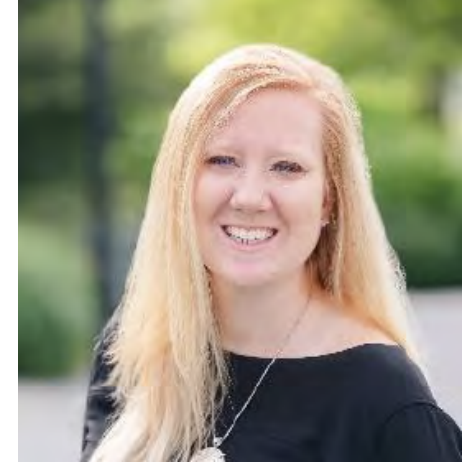
Jamie Scott
Director of Planning and Economic
Development
Georgetown BID



David Levy, AICP
Principal
Livable City Group



Sharon Bradley, RLA, ASLA
President
Bradley Site Design



**Bel St. John Day, RLA, ASLA,
LEED AP BD+C**
Project Manager
Bradley Site Design

Meeting Process

- Please update your name in the participants list with your name and affiliation
- Please mute if you are not talking
- Use the chat to ask questions
- Presentation followed by Q&A
- Meeting is being recorded and will be available on Georgetown BID website
- Follow up questions to David Levy at info@georgetowndc.com
- Presentation will be emailed to the email address you used to register

Project Background

- Georgetown BID received \$150,000 grant from DDOT through Transportation Alternatives Program (TAP)
- Scope of Work includes:
 - Rehabilitate staircase between C&O Canal Towpath and Capital Crescent Trail
 - Create small trailhead area for Capital Crescent Trail
 - Improve physical safety and discourage illegal and unwelcome behavior
 - Improve drainage on Water Street
 - Accommodate adjacent uses and operations
- BID hired Bradley Site Design to design oversee construction
- Project area includes DDOT right-of-way and NPS jurisdiction (C&O Canal)
- Project will be delivered by September 30, 2021 (end of grant period)

Project Schedule





GEORGETOWN DC

Project Area



Site





GEORGETOWN DC

BRADLEY SITE DESIGN

Water Street Project | Public Meeting August 25, 2020

CAPITAL CRESCENT TRAILHEAD



GEORGETOWN - WASHINGTON, DC





GEORGETOWN DC

BRADLEY SITE DESIGN

Water Street Project | Public Meeting August 25, 2020

EXISTING CONDITIONS



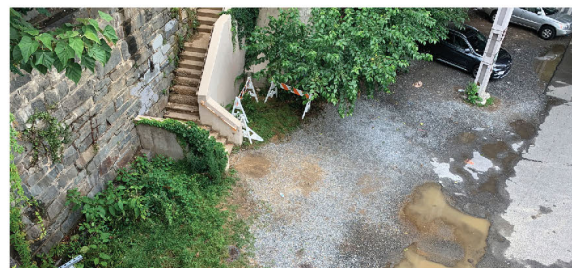
SITE APPROACH FROM K STREET



TRAILHEAD GATEWAY THRESHOLD



HISTORIC STONE WALL AND STAIRS



VIEW OF SITE FROM ALEXANDRIA AQUEDUCT



CONCRETE STAIRS FROM C&O CANAL



THRESHOLD FROM C&O CANAL TO TRAILHEAD SITE



THRESHOLD FROM C&O CANAL TO TRAILHEAD SITE



ORNAMENTAL RAIL AT ALEXANDRIA AQUEDUCT



GRAFFITI AT ALEXANDRIA AQUEDUCT



GEORGETOWN TOWPATH

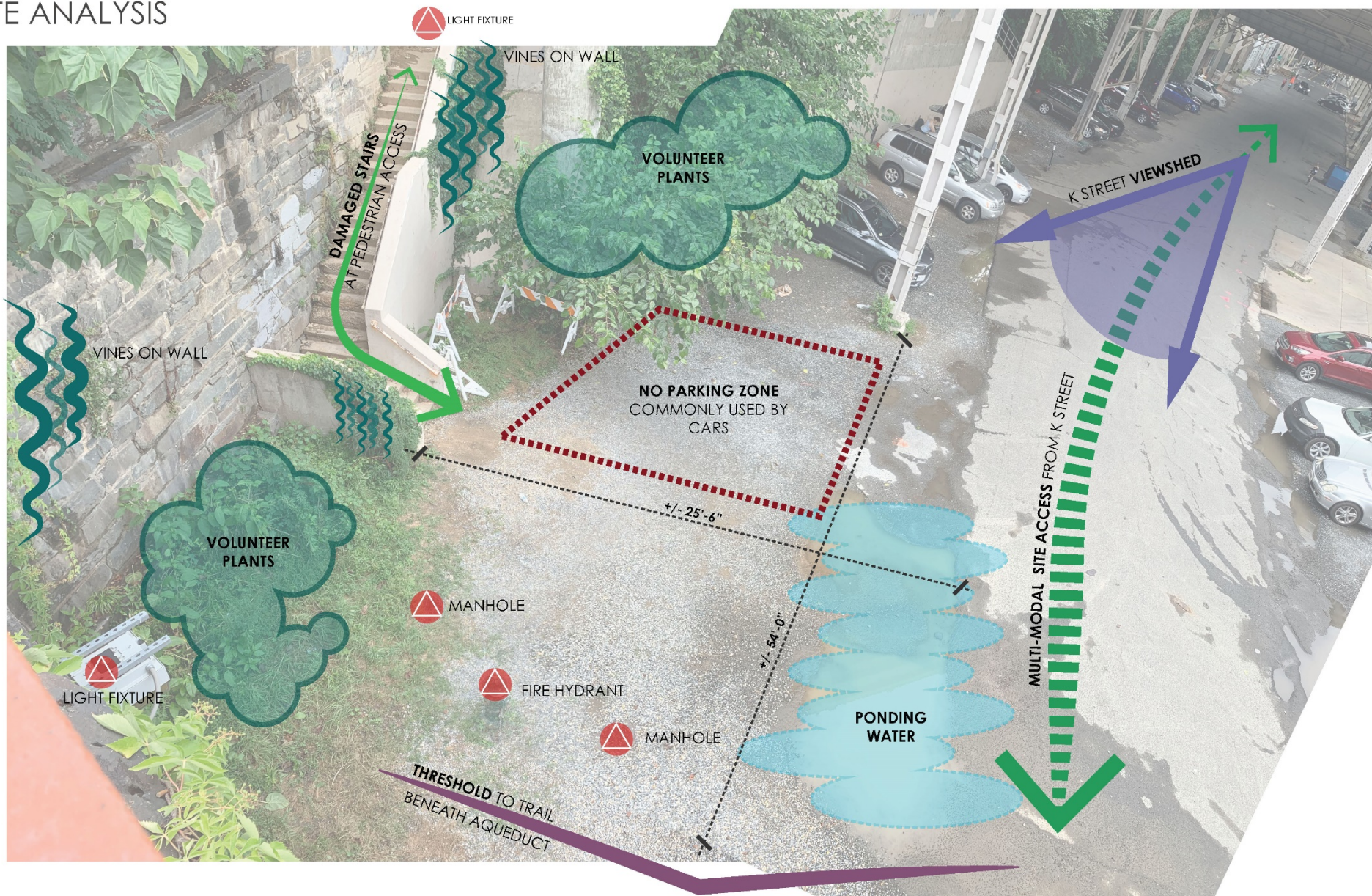


GEORGETOWN DC

BRADLEY SITE DESIGN

Water Street Project | Public Meeting August 25, 2020

SITE ANALYSIS



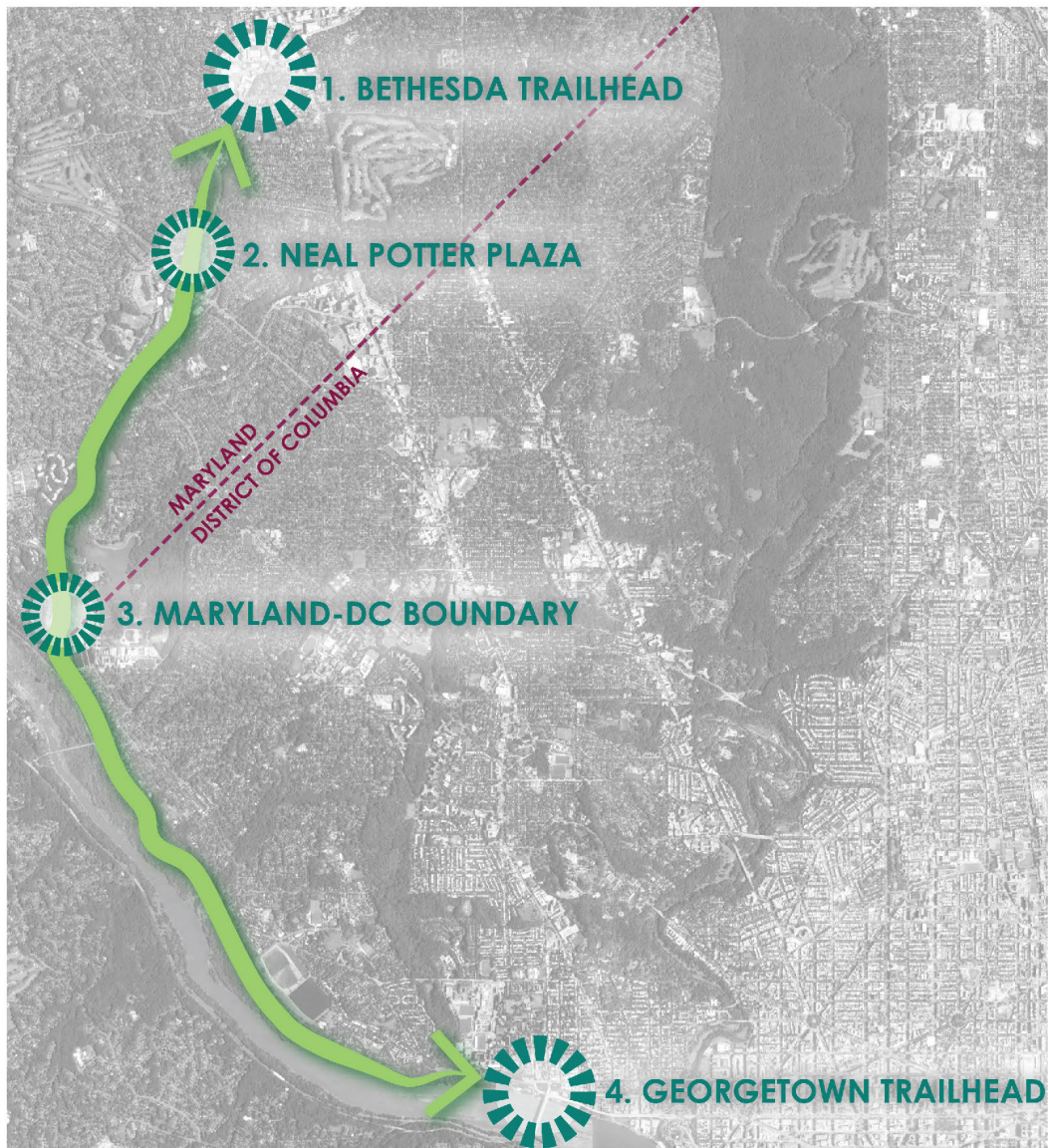


GEORGETOWN DC

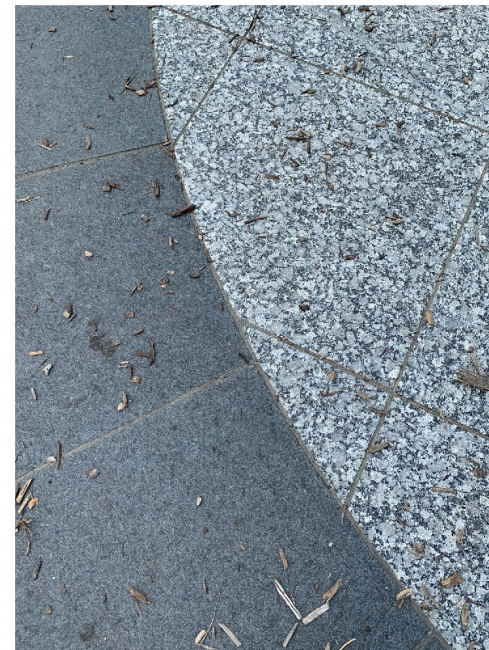
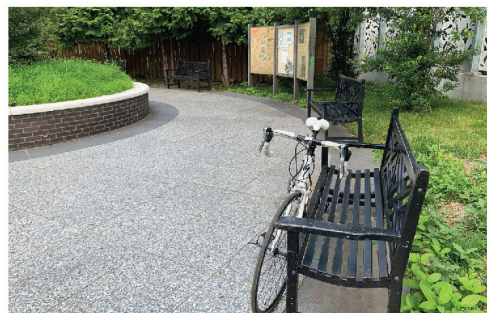
BRADLEY SITE DESIGN

Water Street Project | Public Meeting August 25, 2020

CAPITAL CRESCENT TRAIL - CONTEXTUAL NODES



1. BETHESDA TRAILHEAD





GEORGETOWN DC

BRADLEY SITE DESIGN

Water Street Project | Public Meeting August 25, 2020

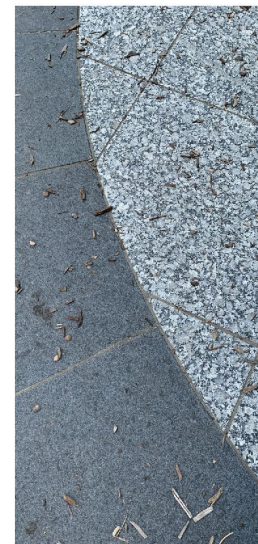
GREATER CAPITAL CRESCENT TRAIL FEATURES AND MATERIALS



EXISTING SIGNAGE



TRAILHEAD IN BETHESDA WITH SPECIAL PAVING, BRICK SEAT WALL, BENCHES, AND SIGNAGE



REST STATION WITH BRICK SEAT WALL AND WATER FOUNTAIN



STONE TUNNEL



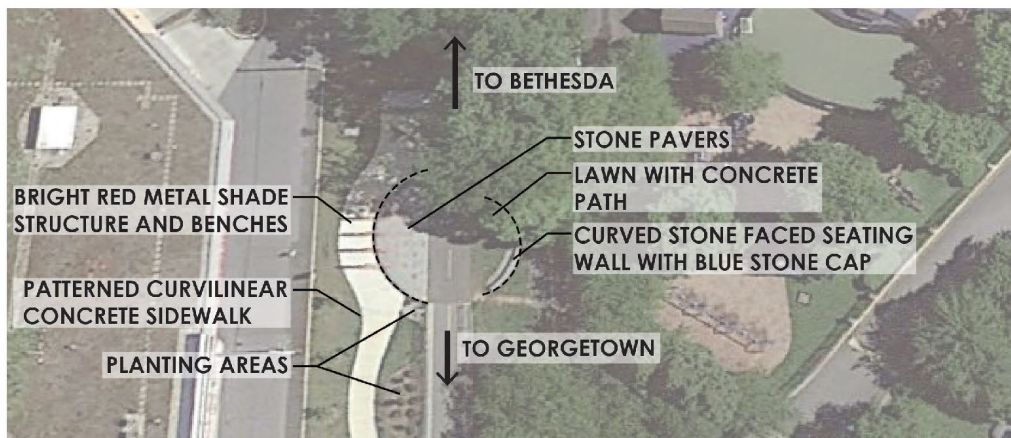
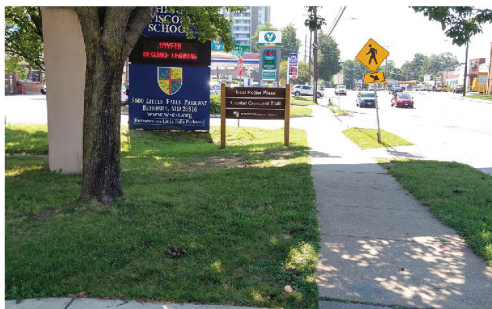
GEORGETOWN DC

BRADLEY SITE DESIGN

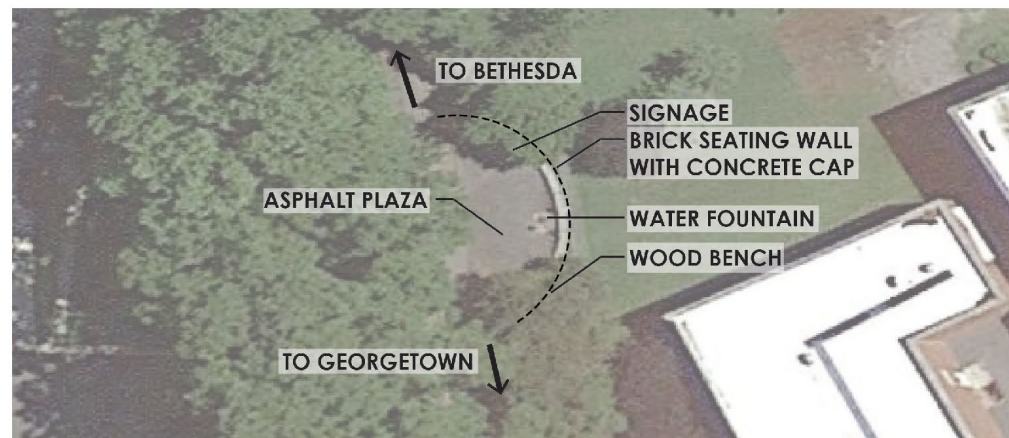
Water Street Project | Public Meeting August 25, 2020

CAPITAL CRESCENT TRAIL - CONTEXTUAL NODES

2. NEAL POTTER PLAZA



3. MARYLAND-DC BOUNDARY



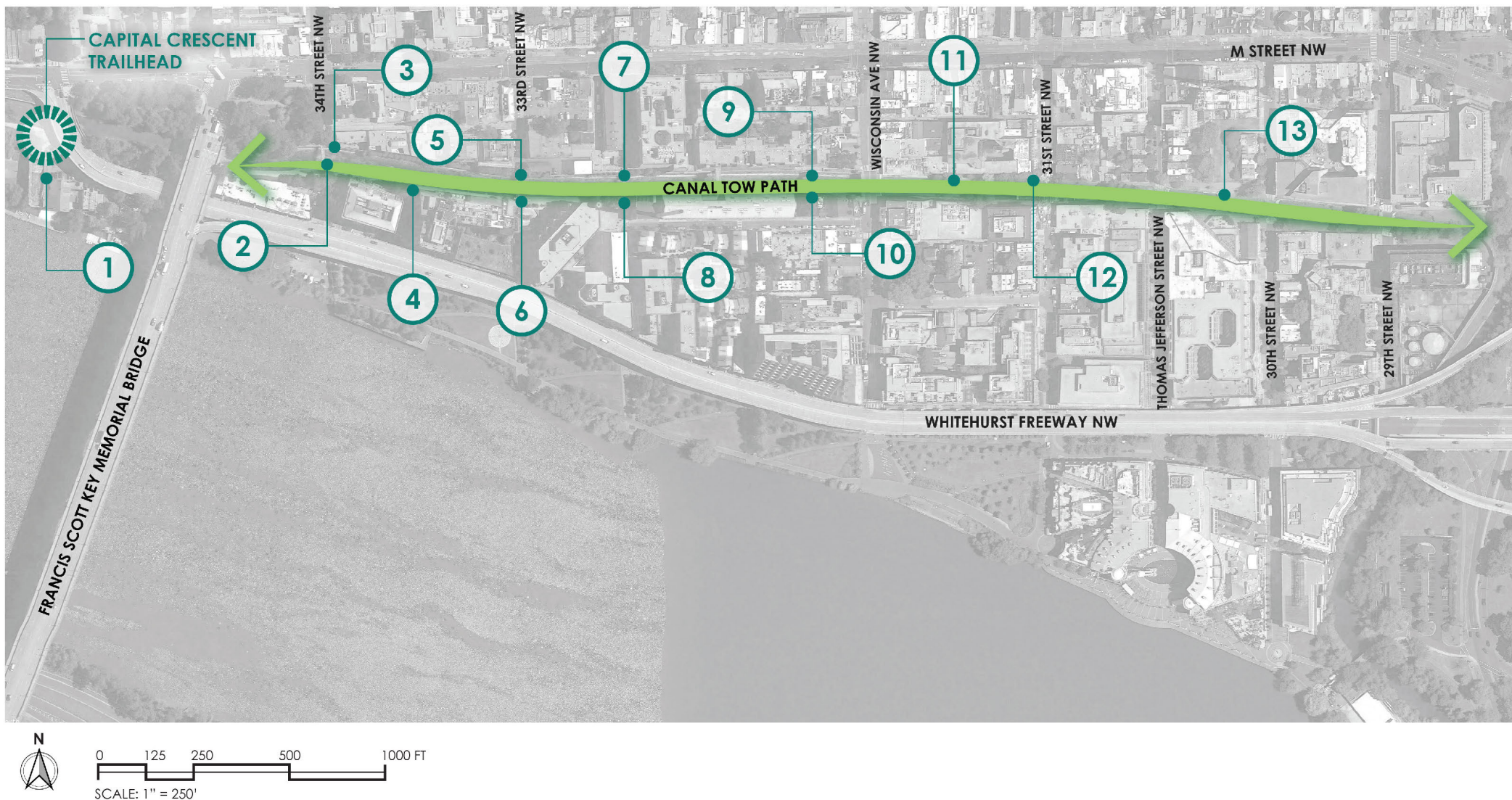


GEORGETOWN DC

BRADLEY SITE DESIGN

Water Street Project | Public Meeting August 25, 2020

GEORGETOWN - CONTEXTUAL NODES AND MATERIALS



GEORGETOWN - CONTEXTUAL NODES AND MATERIALS



1 CAPITAL CRESCENT TRAILHEAD



2 34TH STREET BRIDGE



3 FRANCIS SCOTT KEY PARK



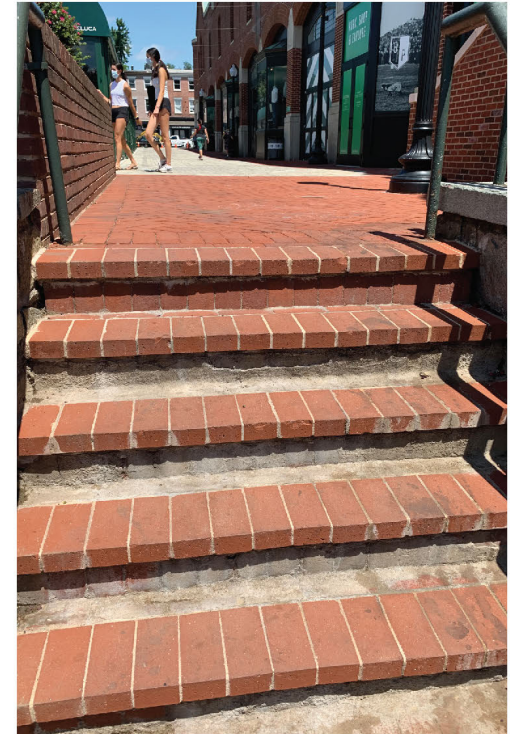
4 34TH STREET CONNECTION AT WATER STREET



5 33RD STREET NW AT M STREET



6 33RD STREET NW AT WATER STREET



7 FISH MARKET PLAZA AT THE SOUTH



7 FISH MARKET PLAZA AT THE SOUTH

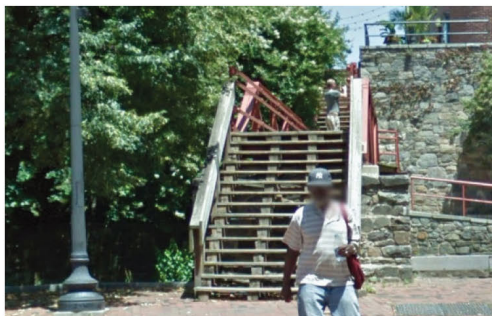


GEORGETOWN DC

BRADLEY SITE DESIGN

Water Street Project | Public Meeting August 25, 2020

GEORGETOWN - CONTEXTUAL NODES AND MATERIALS



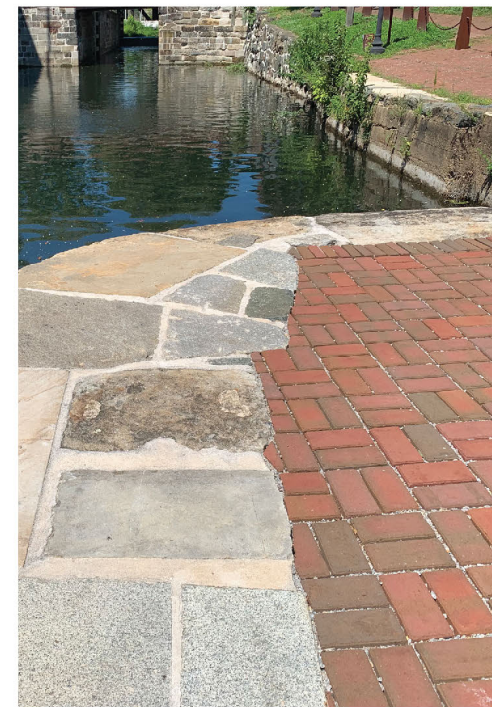
8 FISH MARKET PLAZA AT THE CANAL



10 PINSTripES CANAL CONNECTION



11 PRIVATE ACCESS STEPS



13 LOCK NO. 3 & BOAT BASIN



9 PINSTripES CANAL CONNECTION



10 PINSTripES CANAL CONNECTION



12 31ST STREET NW ACCESS



13 LOCK NO. 3 & BOAT BASIN



GEORGETOWN DC

BRADLEY SITE DESIGN

Water Street Project | Public Meeting August 25, 2020

CONTEXTUAL NODES AND FEATURES IN GEORGETOWN



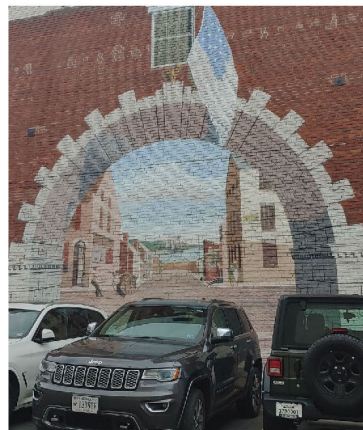
ACCESSIBLE BIKE RAIL AT 34TH STREET
NW CONNECTION TO CANAL



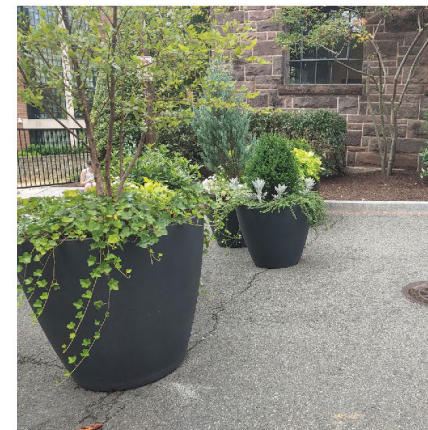
PAVED BIKE RAIL INTEGRATED
INTO STAIRS AT C&O TRAIL



WALL TREATMENT ALONG K STREET AT THE
BERLINER



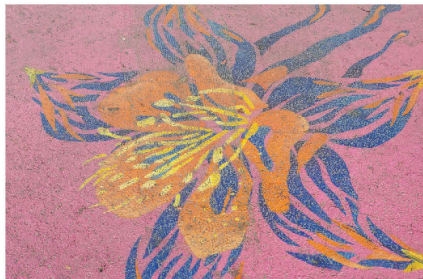
WALL TREATMENT AT PNC BANK
ON M STREET



SEPARATION OF VEHICULAR AND
PEDESTRIAN TRAFFIC AT CANAL ENTRANCE



34TH STREET NW BIKE REPAIR



PAVEMENT TREATMENT AT K STREET



TREATMENT OF C&O TRAIL ENTRANCE WITH MIXED HARDSCAPE



LUSH NATIVE PLANTINGS AT BIORETENTION



GEORGETOWN DC

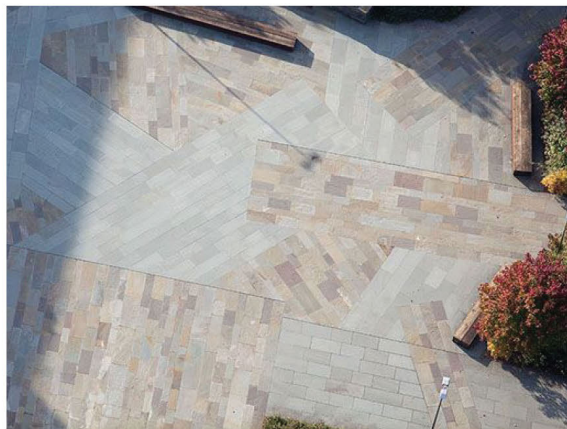
BRADLEY SITE DESIGN

Water Street Project | Public Meeting August 25, 2020

PRECEDENT IMAGERY



IRREGULAR BLUESTONE



BLUESTONE PATTERNING



SHALLOW RAIN GARDEN AT STREET



MULTILEVEL RAINGARDEN AT STREET



WORD STYLIST MURALS



SITE FURNISHINGS



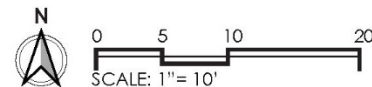
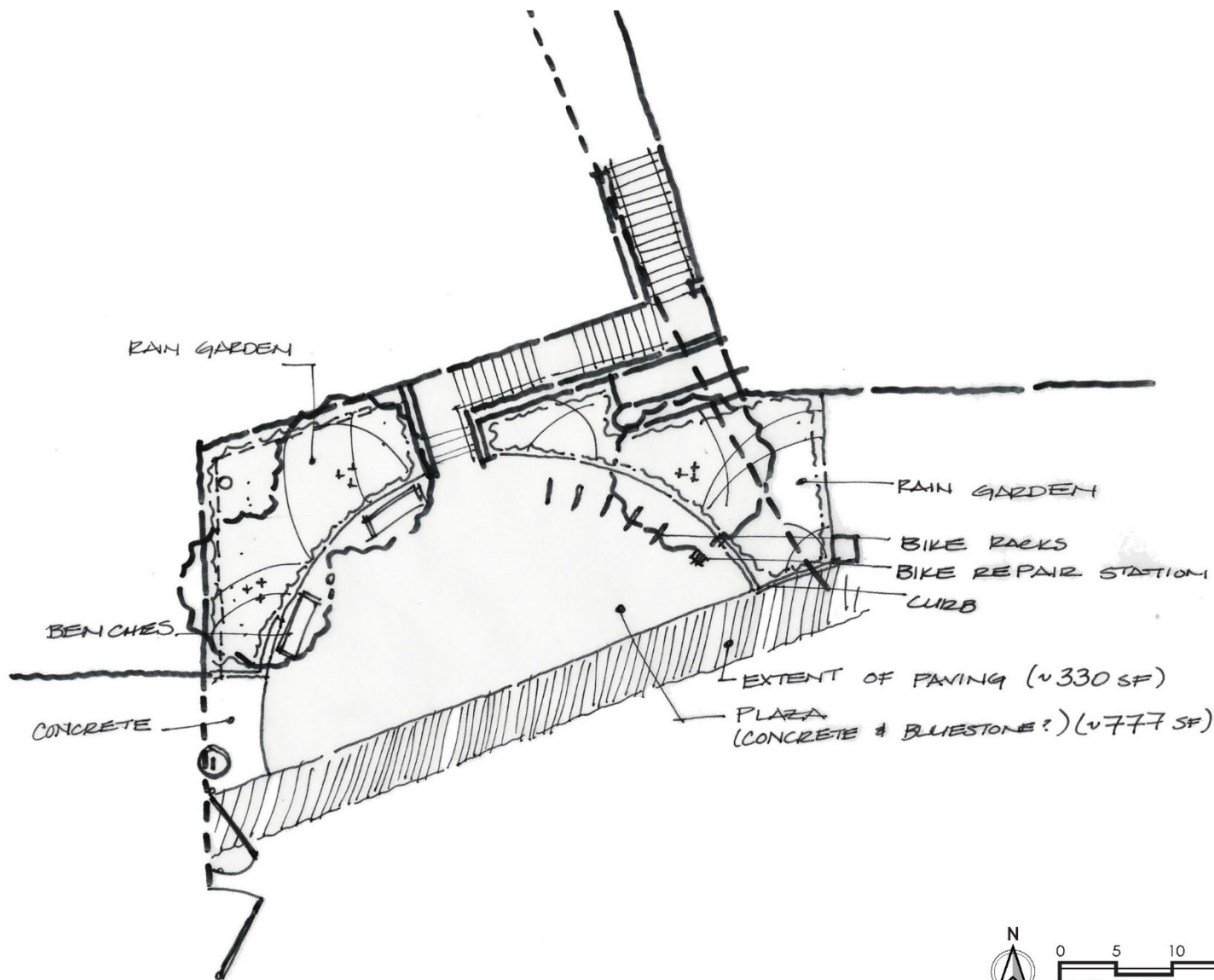


GEORGETOWN DC

BRADLEY SITE DESIGN

Water Street Project | Public Meeting August 25, 2020

CONCEPT SKETCH





Next Steps

Discussions with stakeholders

Design development to 30%

Agency reviews



GEORGETOWN DC

Questions/Input

georgetowndc.com/about/bid-programs/staircase-trailhead-project

info@georgetowndc.com